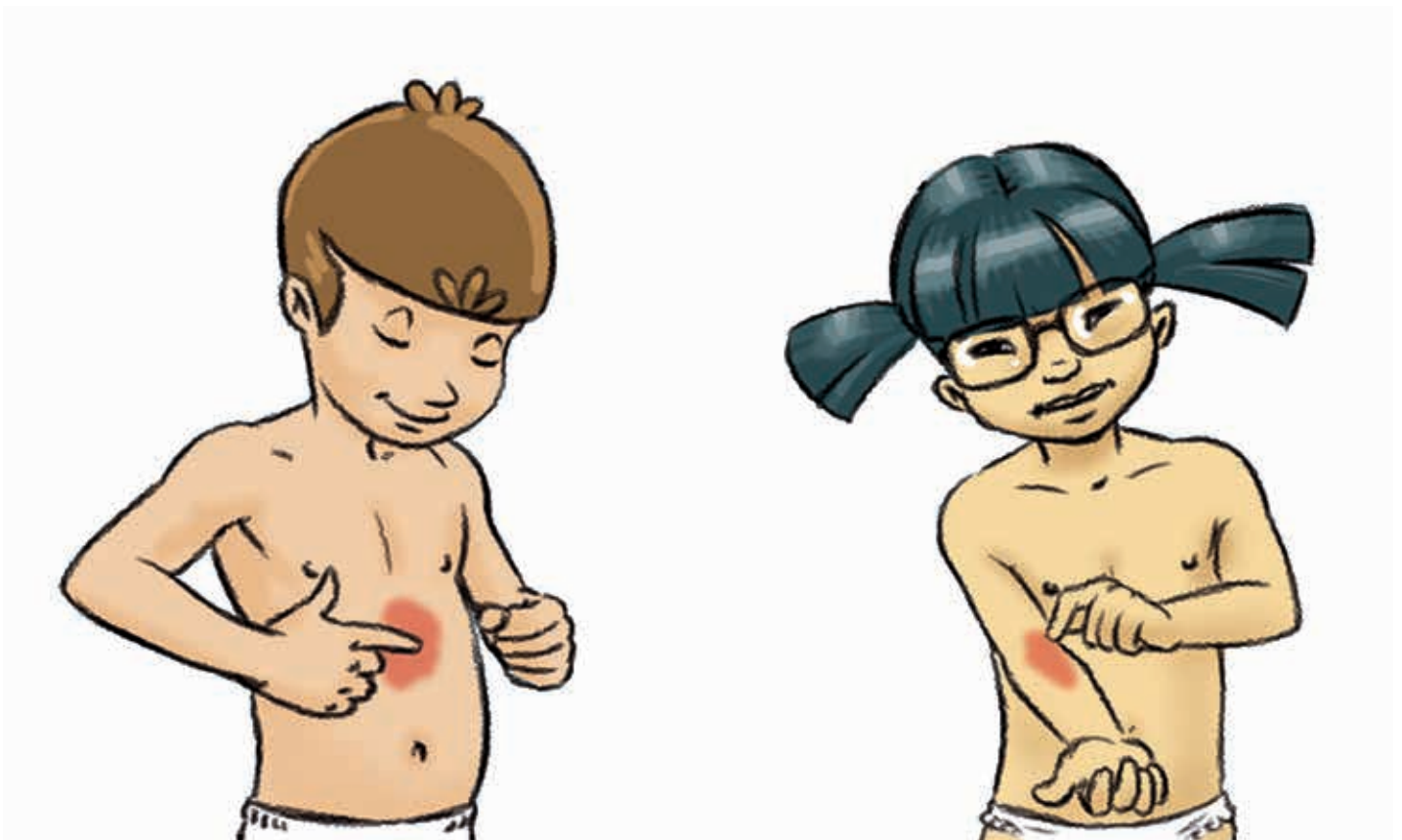


# How to apply your topical corticosteroid

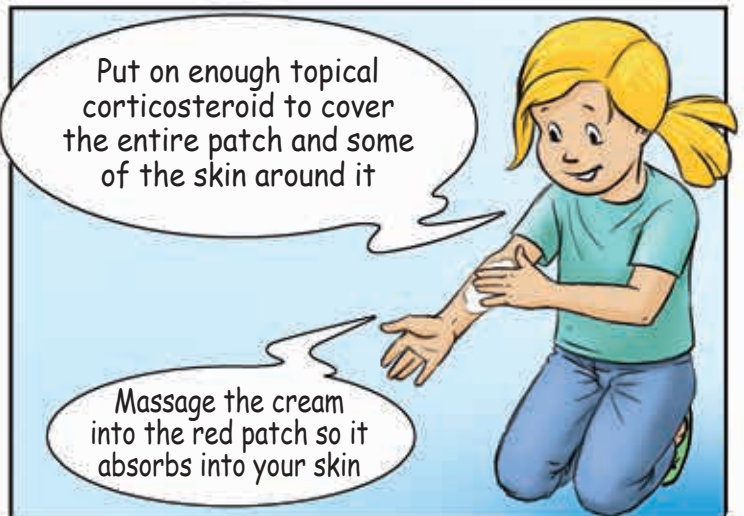
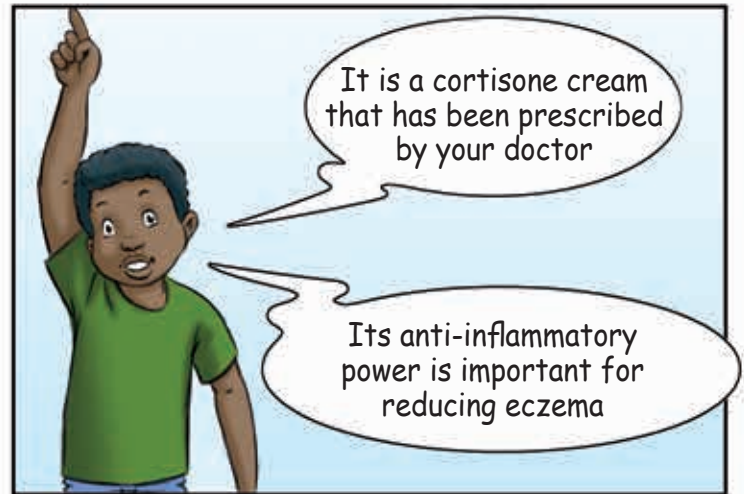
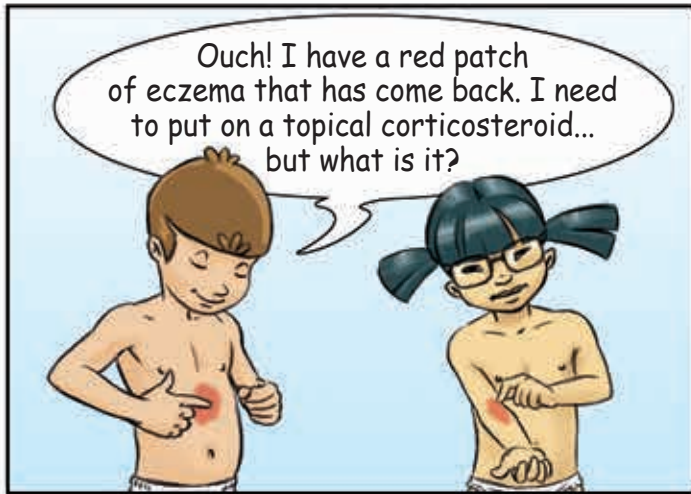
IN IMAGES



Fondation pour la Dermatite Atopique

Recherche et Education

# How to apply your topical corticosteroid



## When do I put it on?

## For how long?



## Where do I put it on?

## What if it comes back again?



Apply your emollient cream to the rest of your body



Fondation pour la Dermatite Atopique  
Recherche et Education

Hôtel-Dieu Saint Jacques  
2, rue Viguerie - 31025 TOULOUSE - France  
Tél : 33 (5) 63 58 98 10

[www.fondation-dermatite-atopique.org](http://www.fondation-dermatite-atopique.org)