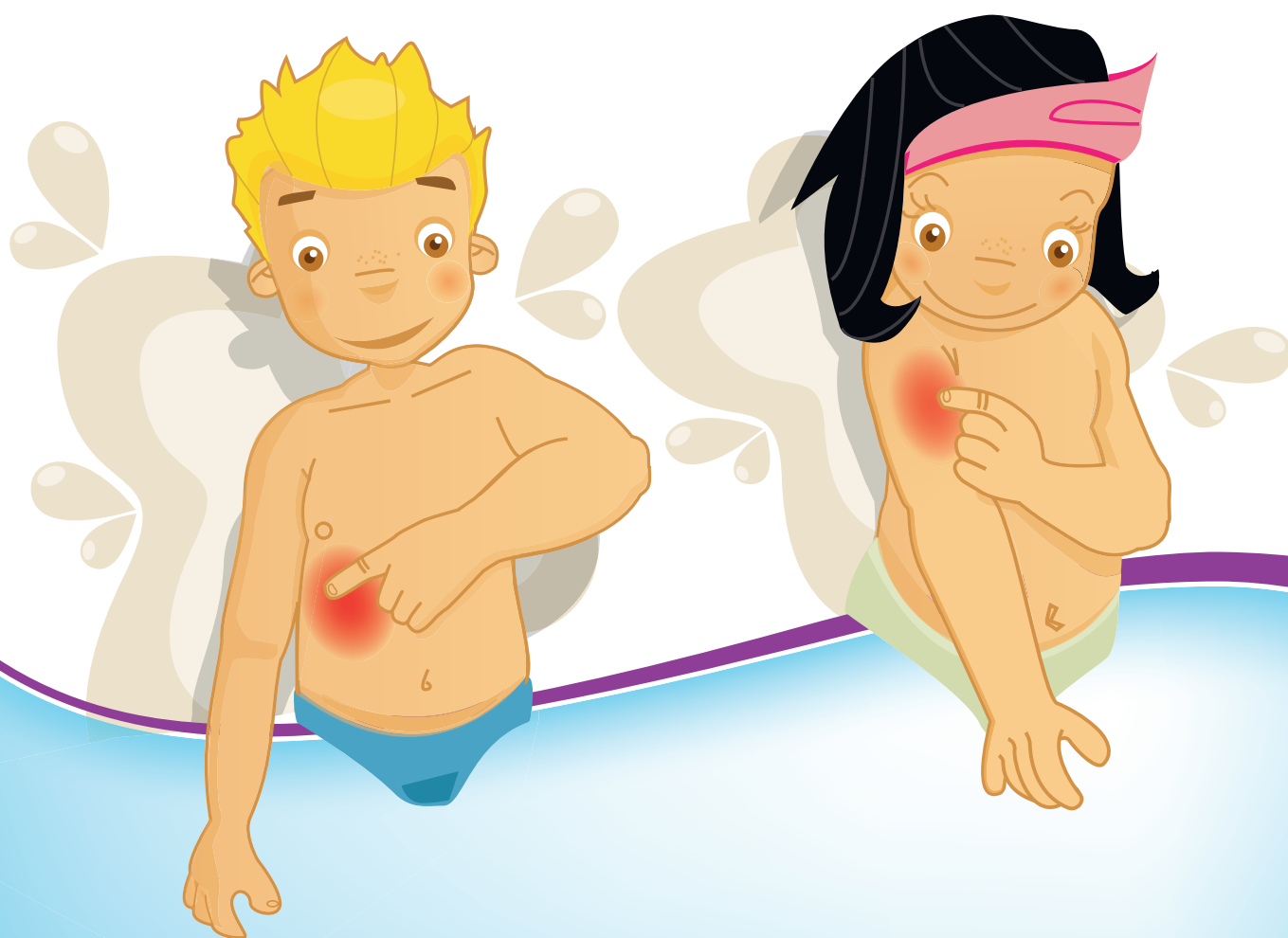
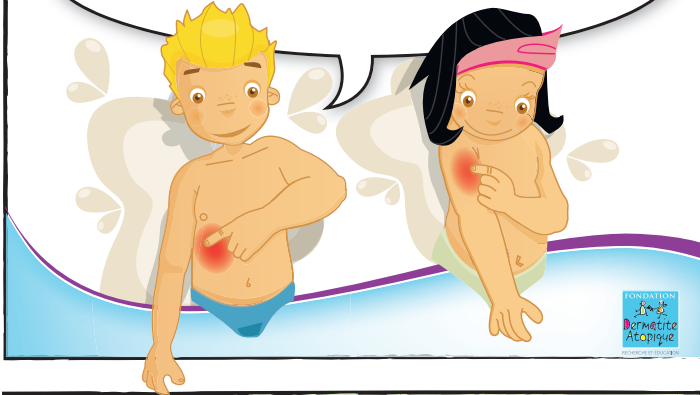


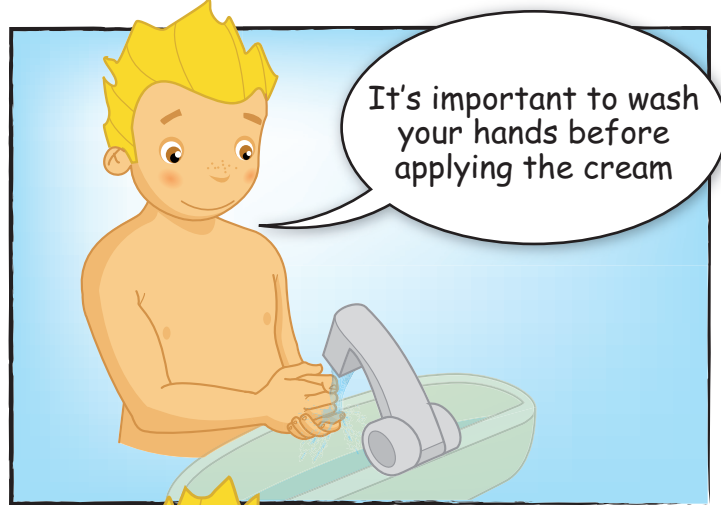
# HOW TO APPLY YOUR CREAM IN PICTURES



# HOW TO APPLY YOUR CREAM IN PICTURES



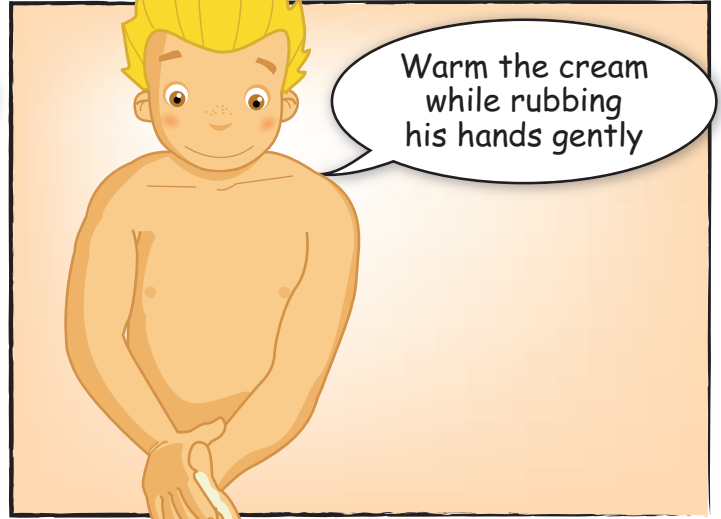
It's important to wash your hands before applying the cream



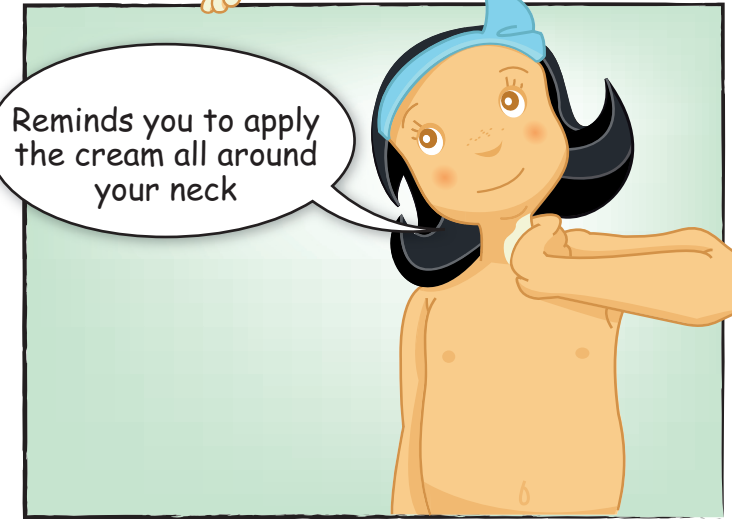
Put your hand in a sufficient quantity of cream



Warm the cream while rubbing his hands gently



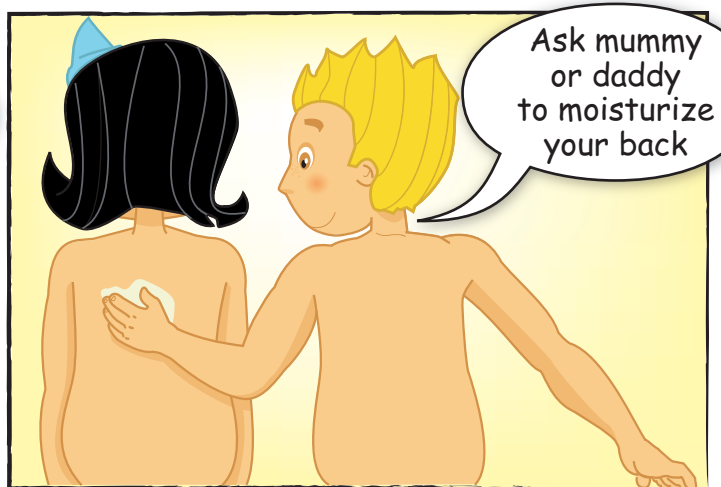
Apply the cream on your cheeks in circles, without rubbing



Reminds you to apply the cream all around your neck



Don't forget the belly and legs



Ask mummy or daddy to moisturize your back



RECHERCHE ET ÉDUCATION

**Fondation pour la Dermatite Atopique**  
Recherche et Education

Hôtel-Dieu Saint Jacques  
2, rue Viguerie - 31000 Toulouse - France

**[www.fondation-dermatite-atopique.org](http://www.fondation-dermatite-atopique.org)**

[fondationdermatiteatopique@pierre-fabre.com](mailto:fondationdermatiteatopique@pierre-fabre.com)