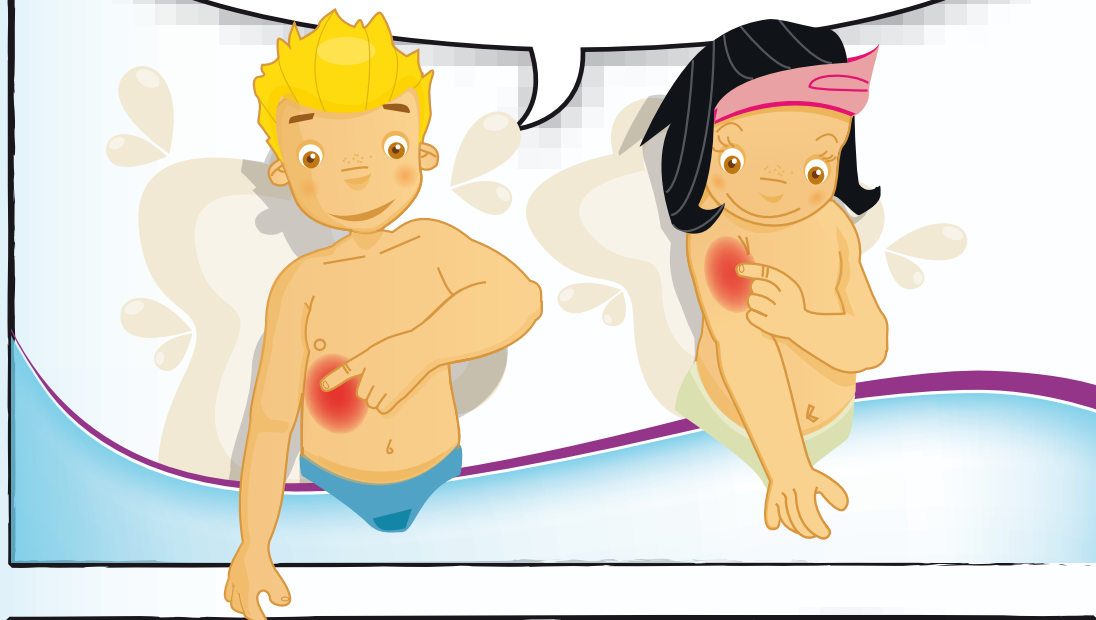
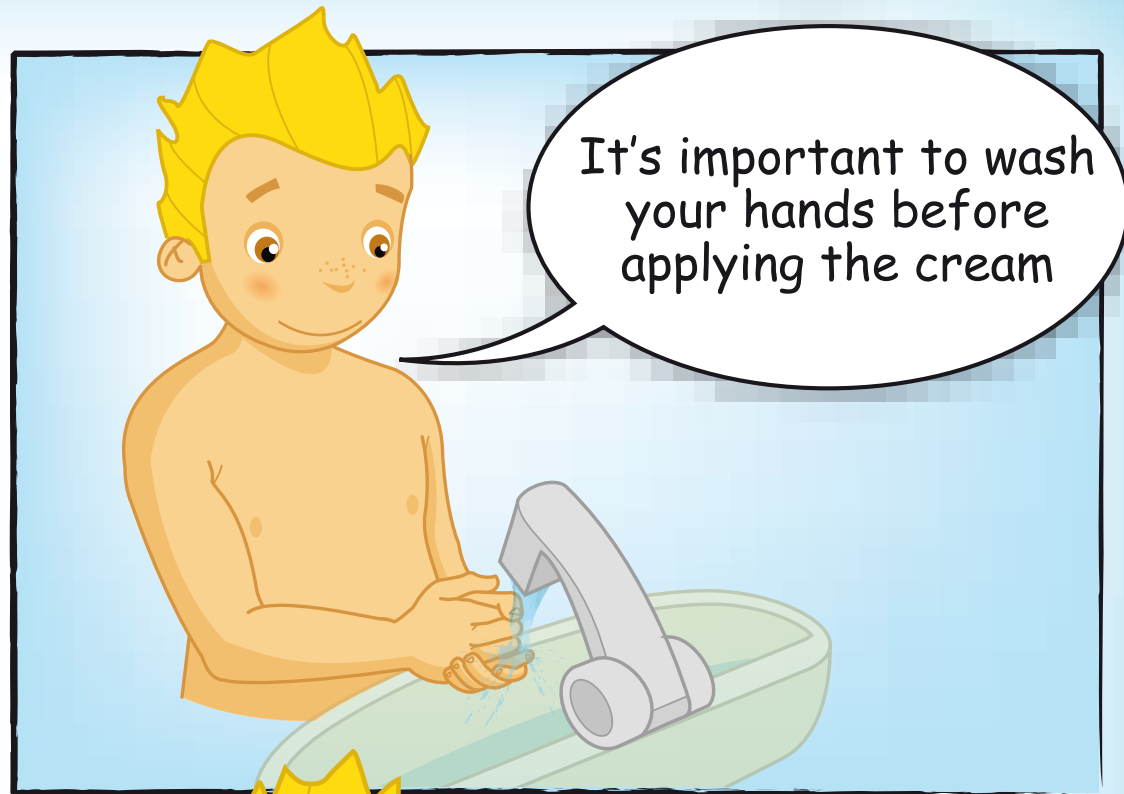


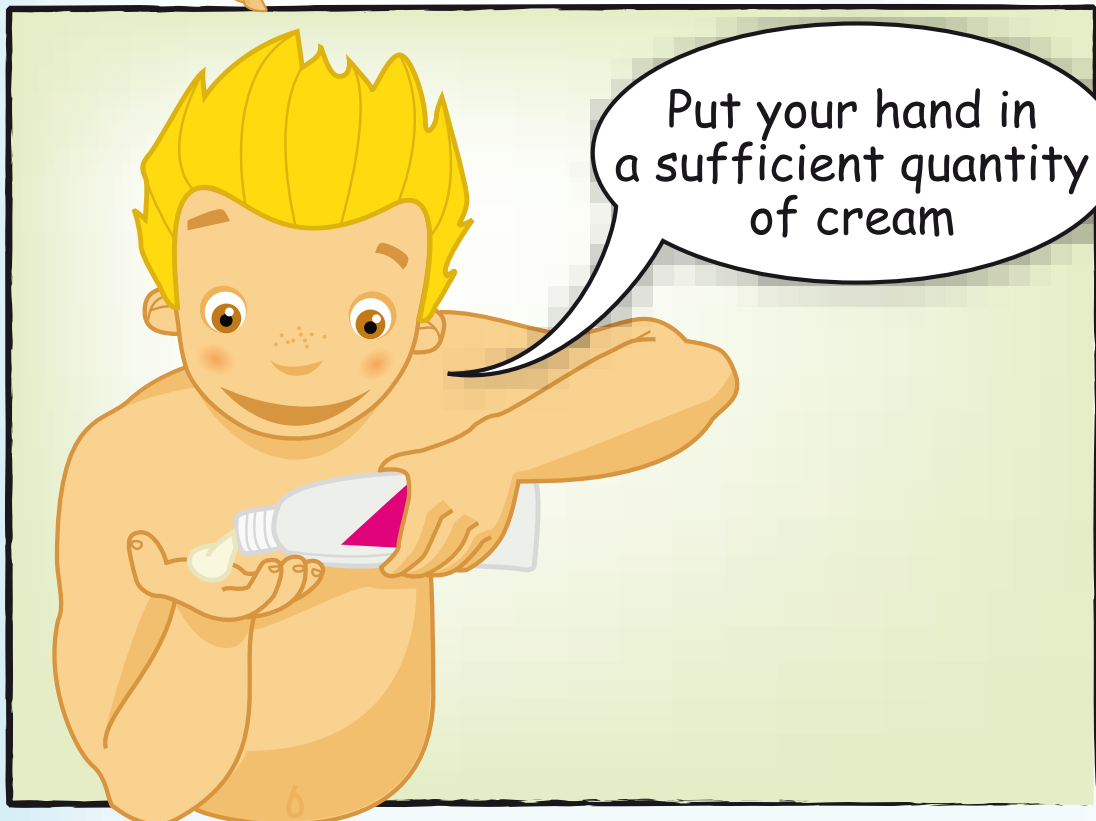
HOW TO APPLY YOUR CREAM IN PICTURES



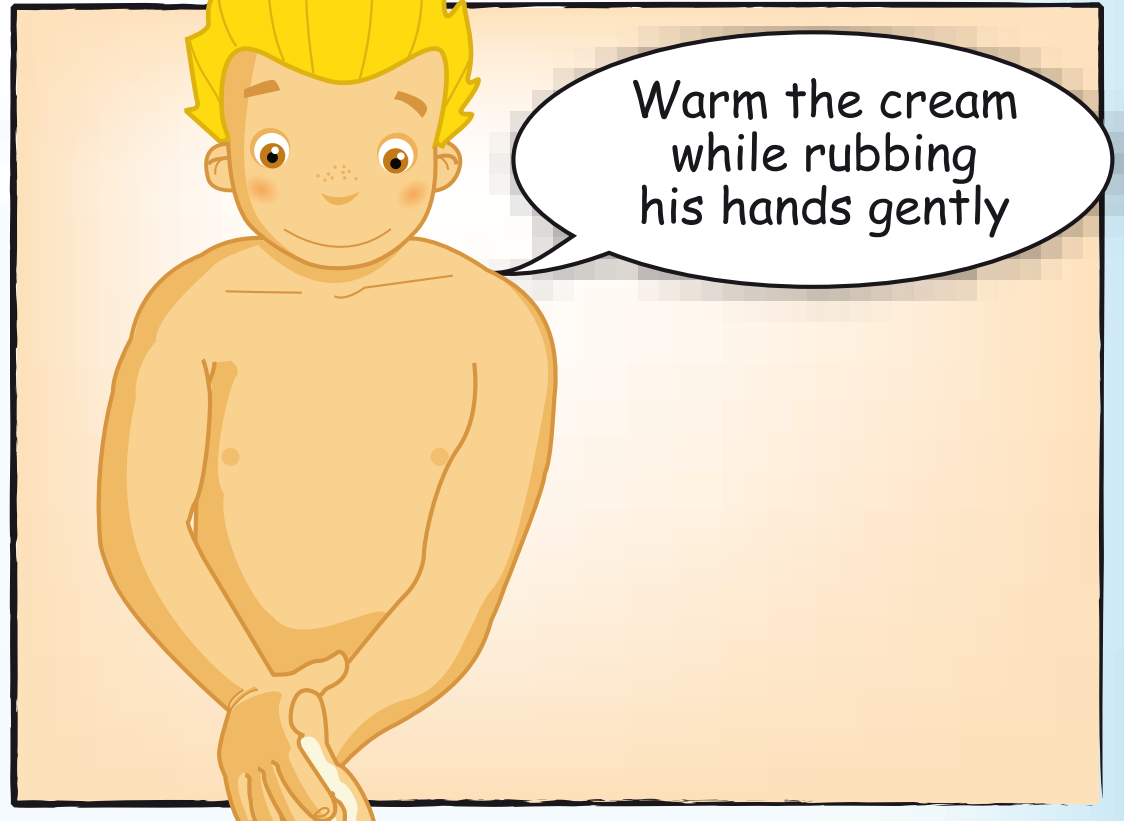
It's important to wash your hands before applying the cream



Put your hand in a sufficient quantity of cream



Warm the cream while rubbing his hands gently



Apply the cream on your cheeks in circles, without rubbing



Reminds you to apply the cream all around your neck



Don't forget the belly and legs



Ask mummy or daddy to moisturize your back

